

12-

mavzu

LABORATORIYA ISHI

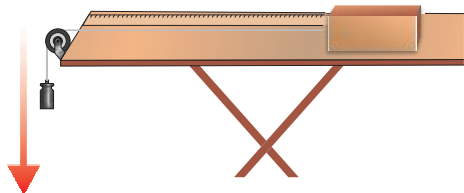
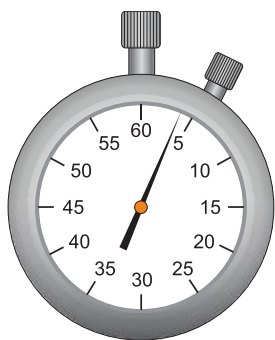
Notekis harakatning o'rtacha tezligini aniqlash

Ishning maqsadi: notekis harakatlanayotgan jismning o'rtacha tezligini aniqlash.

Kerakli asbob va jihozlar: stol, ko'chmas blok, yog'och brusok, yuklar to'plami, o'lchov lentasi, sekundomer.

Ishni bajarish tartibi:

1. Stol chetiga ko'chmas blokni gorizontal holatda o'rnatish.
2. Ko'chmas blok orqali ipni o'tkazib, uning bir uchiga yog'och brusokni bog'lang.
3. Stol chetidan ma'lum bir uzoqlikka yog'och brusokni qo'ying.
4. Stol chetidan brusokkacha bo'lgan masofani o'lchov lentasi yordamida o'lchang.
5. Ipning ikkinchi uchiga m massali birorta yuk bog'lang. Brusokni harakatga keltiradigan yuk tanlang.
6. Yog'och brusokni dastlabki holatiga qaytaring va uni ushlab turing.
7. Yog'och brusokni qo'yib yuborayotganingizda sekundomerni ishga tushiring.
8. Yog'och brusok harakati stol oxiriga yetganda to'xtatildi. Vaqt o'lchashni ham shu zahoti to'xtating. Sekundomer ko'rsatkichini yozib oling.
9. Yog'och brusok o'rtacha tezligini $v_{o'r} = \frac{s}{t}$ formula yordamida hisoblang va jadvalga yozing.
10. Tajribani turli masofalarda takrorlang. Xulosa yozing.



No	masofa s , m	vaqt t , s	tezlik v , m/s
1			
2			
3			
4			



1. Harakatining qaysi paytida yog'och brusokning oniy tezligi eng katta bo'ladi?
2. Nima uchun yog'och brusok bir xil masofada harakat qilsa-da, vaqti har xil bo'ladi?